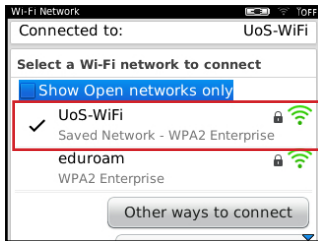


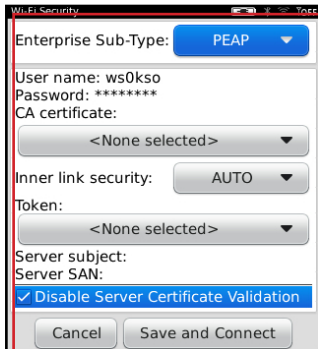
Blackberry UoS-WiFi connection guide



Step 1: Tap Settings

Step 2: Tap Wi-Fi

Step 3: Tap UoS-WiFi



Step 4: Check the following settings,

Enterprise Sub Type - PEAP

Username - University User ID

Password - University Password

CA certificate - None selected

Inner link security - Auto

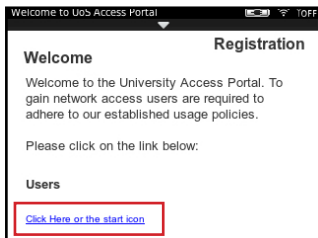
Token - None selected

Server subject - blank

Server San - blank

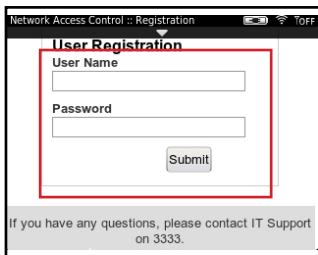
Disable Server Certificate Validation - Tick

Tap Save and Connect



Step 5: Open a browser and the registration process will begin

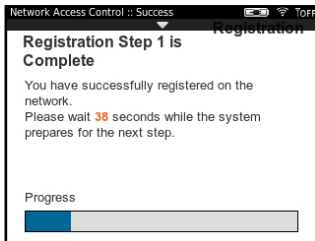
Step 6: Tap Click Here



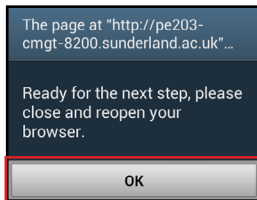
Step 7: Enter your User ID and Password

Step 8: Tap Submit

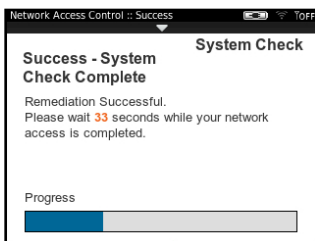




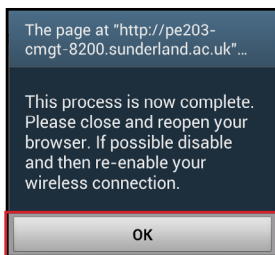
Step 9: Wait for the 45 second countdown to complete



Step 10: Tap OK and close your browser



Step 11: Reopen your browser and open a new tab, you may need to browse to a page to activate the next part of the process, wait for the 45 second countdown to complete



Step 12: Tap OK and close your browser. You are now connected to the University WiFi service

Still Can't get connected? Log a job via the IT portal <http://itportal.sunderland.ac.uk>

