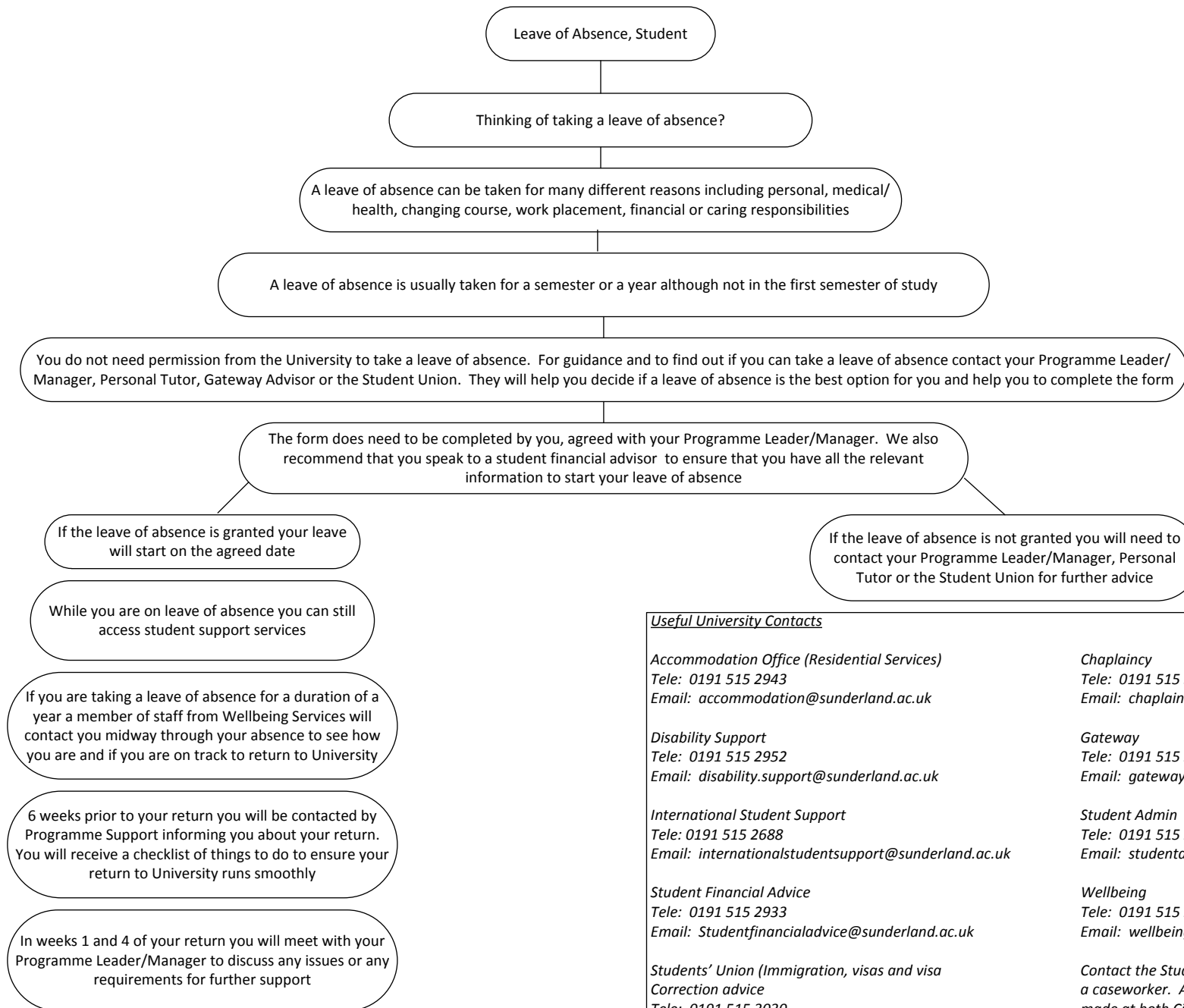


Leave of Absence: Student Guidance Flow Chart



Useful University Contacts

<p><i>Accommodation Office (Residential Services)</i> Tele: 0191 515 2943 Email: accommodation@sunderland.ac.uk</p>	<p><i>Chaplaincy</i> Tele: 0191 515 3482 Email: chaplain@sunderland.ac.uk</p>
<p><i>Disability Support</i> Tele: 0191 515 2952 Email: disability.support@sunderland.ac.uk</p>	<p><i>Gateway</i> Tele: 0191 515 2222 Email: gateway@sunderland.ac.uk</p>
<p><i>International Student Support</i> Tele: 0191 515 2688 Email: internationalstudentsupport@sunderland.ac.uk</p>	<p><i>Student Admin</i> Tele: 0191 515 2077 Email: studentadmin@sunderland.ac.uk</p>
<p><i>Student Financial Advice</i> Tele: 0191 515 2933 Email: Studentfinancialadvice@sunderland.ac.uk</p>	<p><i>Wellbeing</i> Tele: 0191 515 2933 Email: wellbeing@sunderland.ac.uk</p>
<p><i>Students' Union (Immigration, visas and visa Correction advice)</i> Tele: 0191 515 3030 Email: su.studentadvice@sunderland.ac.uk</p>	<p>Contact the Students' Union for a discussion with a caseworker. A face to face appointment can be made at both City Campus or St Peter's Campus or via skype at uosil.</p>