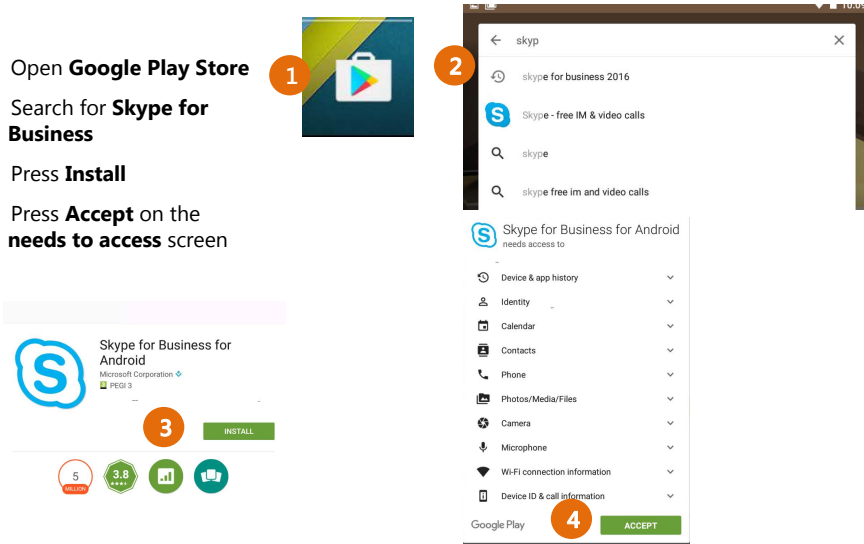


## Android Device Install and Setup

Skype for Business is available for your Android device. Follow the steps to Install and Setup your Android device.

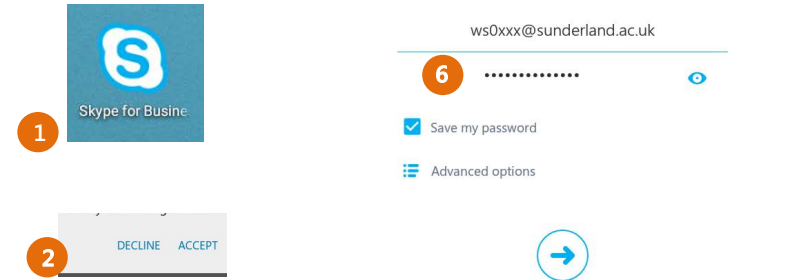
### 1. Download & Install from Google Play Store

- 1) Open **Google Play Store**
- 2) Search for **Skype for Business**
- 3) Press **Install**
- 4) Press **Accept** on the **needs to access** screen



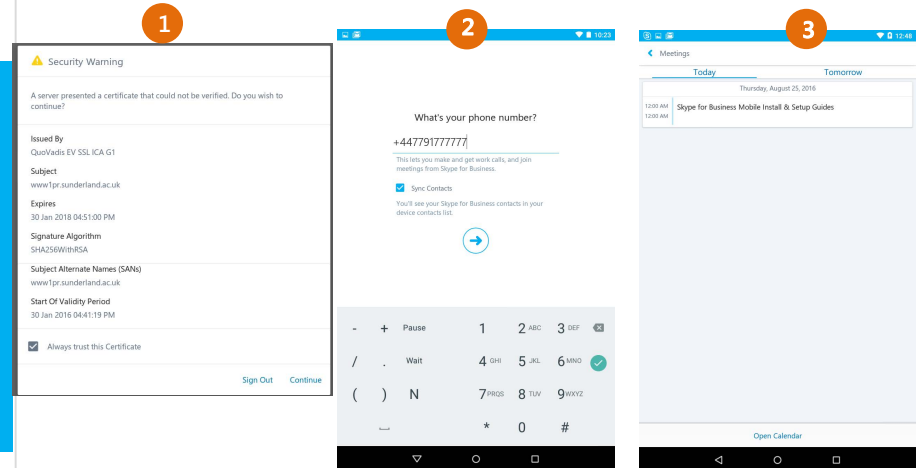
### 2. Run and Add Settings

- 1) Open **Skype for Business**
- 2) On License screen press **Accept**
- 3) In Sign-in Address type **username@sunderland.ac.uk**  
eg. **ws0tty@sunderland.ac.uk**
- 4) Press **Advanced Options**
- 5) In the Enter User Name type **uni\username** then click return arrow
- 6) In Password type in your university Password then Press on the **next arrow**



### 3. Finish Set-Up

- 1) Tick **Always trust this Certificate**. Press the Continue
- 2) Type in your mobile telephone number in the **Whats your phone number?** screen. Type in the number in the format **+4477XXXXXXX** (Leave out the first 0 from you number). Press the next arrow
- 3) Set Up is complete



## Having trouble connecting your Android Device?

email: [itsupport@sunderland.ac.uk](mailto:itsupport@sunderland.ac.uk)

or Telephone IT Support on 0191 515 3333